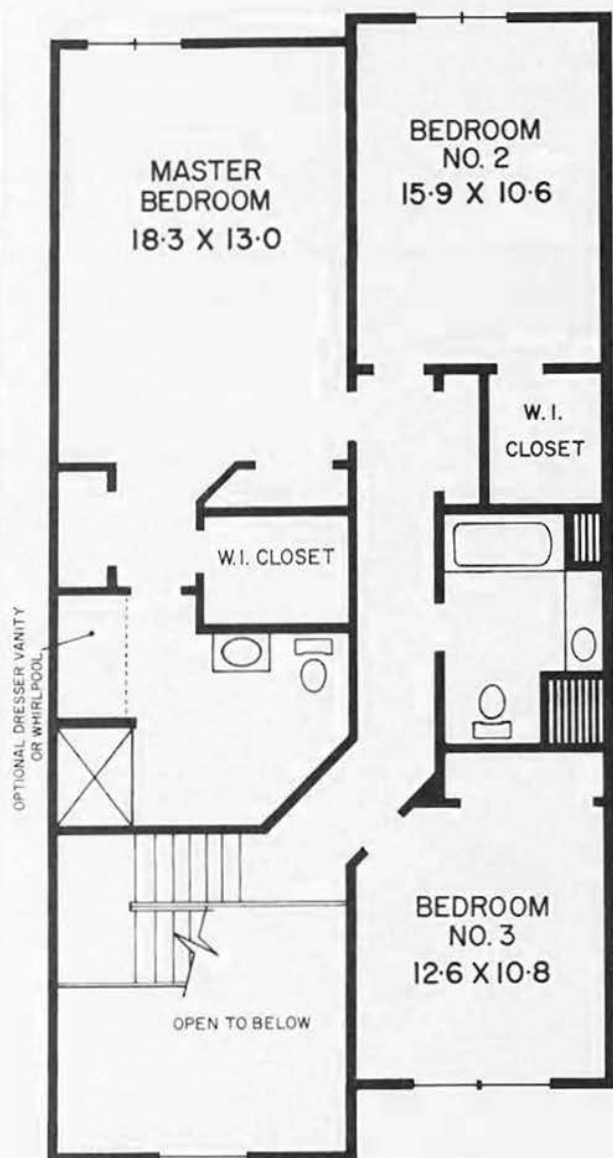


the WARWICK (a-3)

Townhome

3 Bedrooms - 2 1/2 Baths - Garage

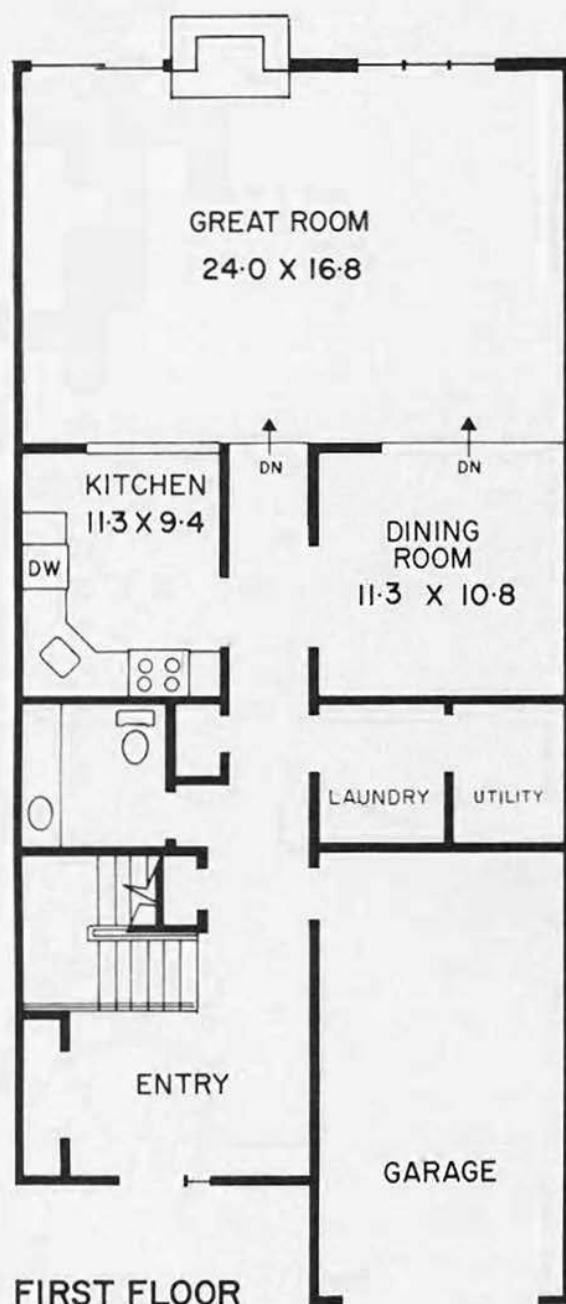


SECOND FLOOR

If three bedrooms with lots of space meet your need or desire, here is the townhome that ideally serves that purpose.

The first floor level features a spacious 2 storied entry foyer with expanded outerwear closet, separate laundry room, extensive "L" styled cabinet kitchen with stainless steel corner sink, eat-in area, and pass thru to the magnificent step-down 24 foot great room which features a working fireplace, patio door and extended glass area. A large formal dining room, guest powder room with oversized vanity, and interior access garage all add to this design for today's living.

The exposed contemporary stairway leads to an exceptional master bedroom suite with a personal bath sufficient to accommodate an optionally oversized whirlpool tub, while retaining the separate shower. The suite also features one large walk-in, plus two additional wall closets. Two other huge twin sized bedrooms with extensive closet space, and a large full sized main bath, complete the bedroom level of this marvelously planned and generously sized three bedroom townhome.



FIRST FLOOR

All dimensions and elevation details are approximate, and are subject to variations and changes.