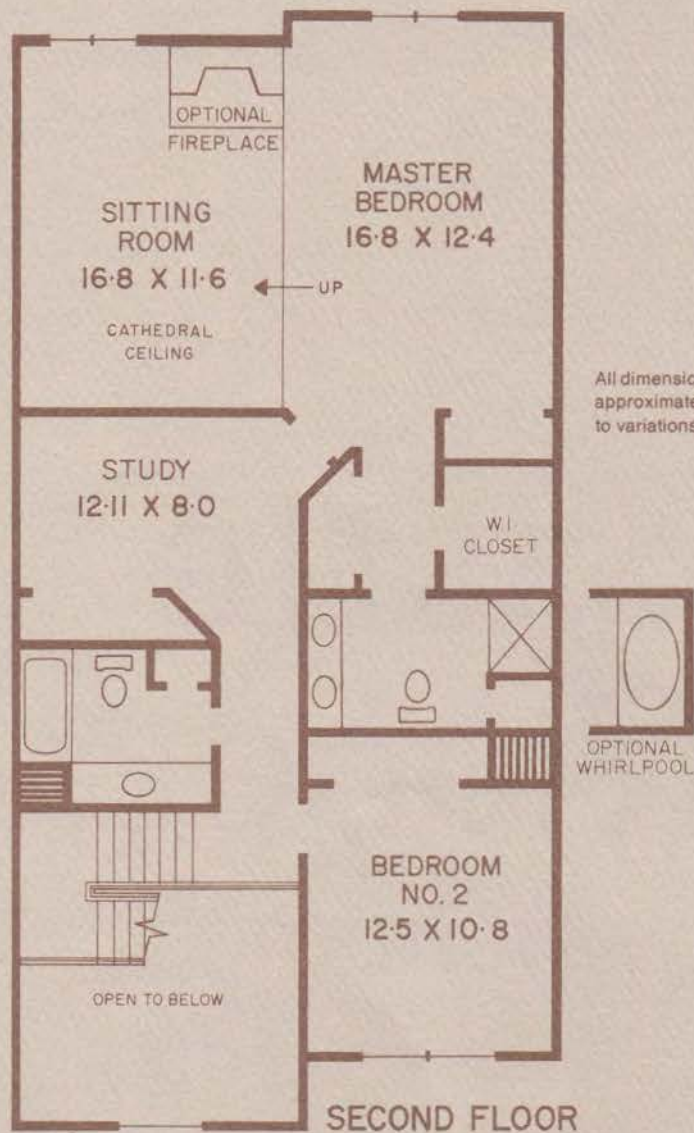




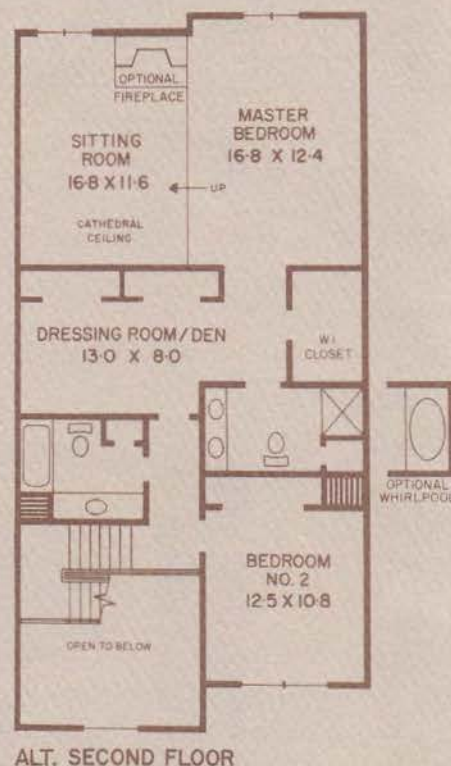
Castle  
Ridge  
townehomes

RIVER ROAD • EAST HANOVER  
MORRIS COUNTY • NEW JERSEY

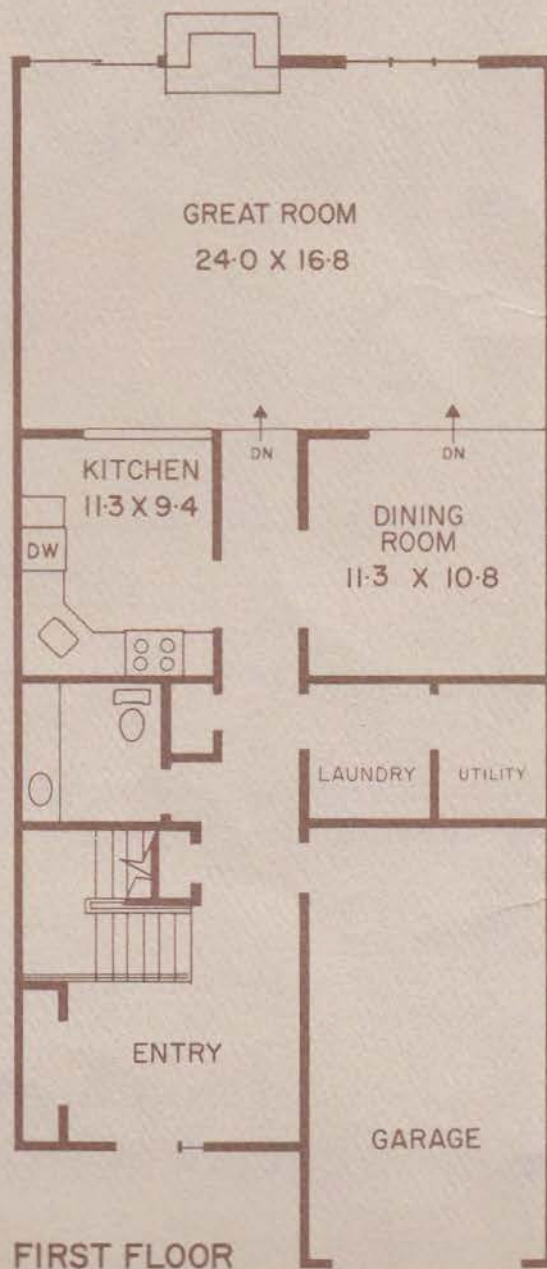




All dimensions and elevation details are approximate, and are subject to variations and changes.



ALT. SECOND FLOOR



FIRST FLOOR

## the DOVER (a-2) Townhome

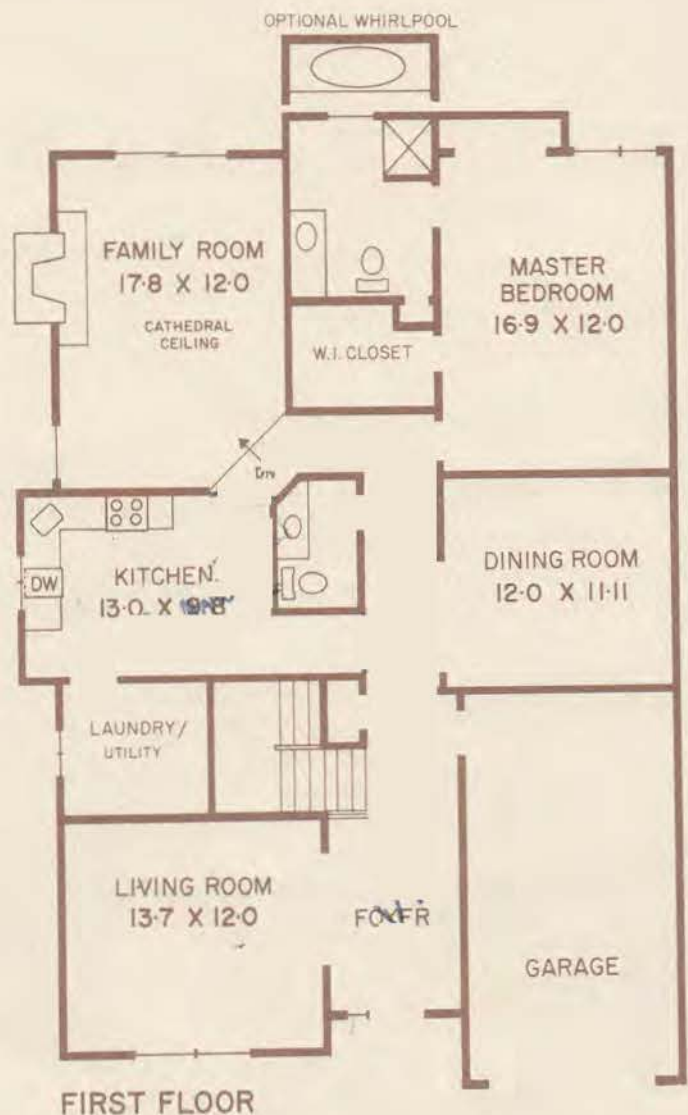
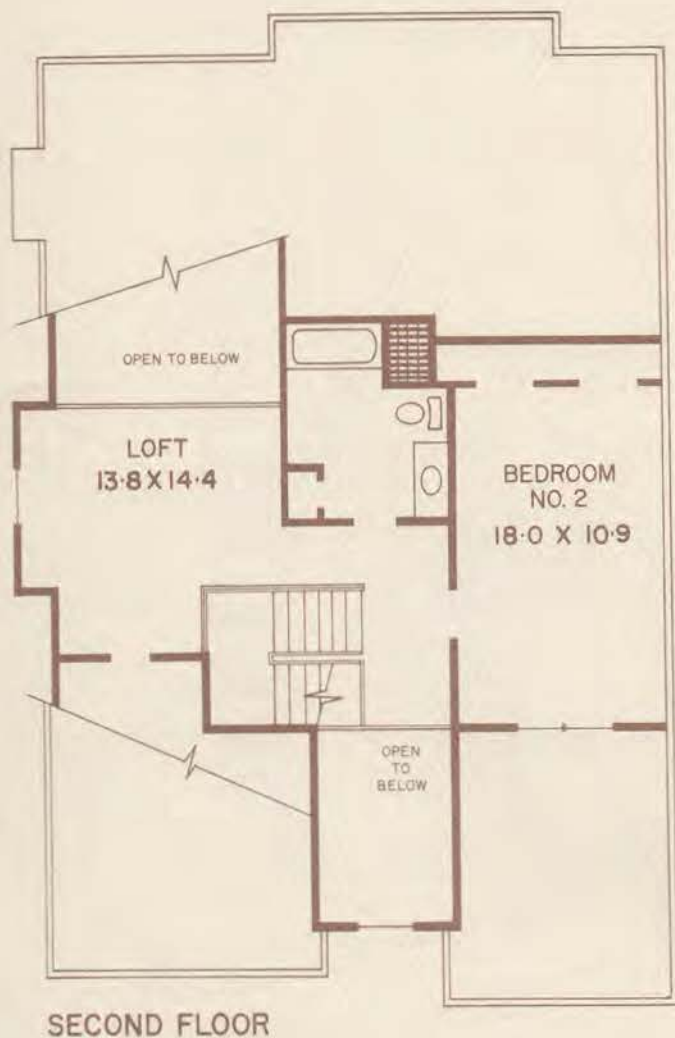
2 Bedrooms - 2 1/2 Baths - Garage  
With Alternate Upper Level

If entertaining is your style, this elegantly designed townhome provides all the space needed. The expansive and heightened 24'x16' step-down great room with working fireplace and sliding patio doors is the centerpiece for just that entertaining style. The spacious eat-in kitchen with "pass-thru" to the great room, and the formal dining room which overlooks the great room, add to this outstanding entertaining center area. Additionally, the spacious vaulted ceiling foyer and expanded outerwear closet uniquely contribute to the style of this townhome. A large guest powder room, separate laundry room, and garage with interior access complete the first floor plan.

An open contemporary stairway leads to the bedroom level. Highlighting this level is a large master bedroom suite featuring a separate step-up sitting room with cathedral ceiling and optional fireplace. The expanded master bedroom includes multiple closets with a walk-in, and an expanded personal bath large enough to optionally accommodate an oversized whirlpool tub. A twin-sized bedroom, large main bath with linen closet, and a unique open study area complete this immensely sized upper level.

The alternate second floor layout provides for an even larger and more exquisite master bedroom suite by incorporating a dressing room/den into its private quarters.





All dimensions and elevation details are approximate, and are subject to variations and changes.

## the STIRLING (B)

### Ranch - Plus

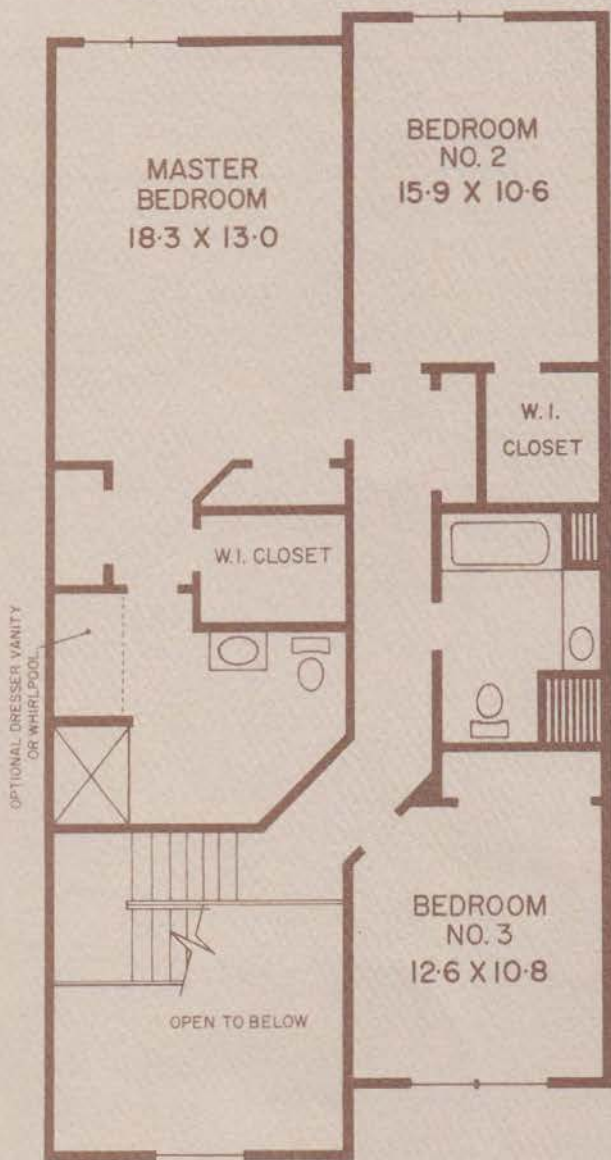
2 Bedrooms - 2 1/2 Baths - Garage

This light and cheerful ranch plus end unit offers the luxury of ranch style living, plus an expanded extra bedroom area on the upper level.

The main level includes a huge bedroom area with walk-in and expanded sized closets, plus a linen closet in the personal bath with shower. This personal bathroom is large enough to provide for an oversized optional whirlpool tub. Complimenting this unique bedroom location is an ideal traffic pattern which includes a step-down family room with cathedral ceiling, patio door and operating fireplace. Also a guest powder room with vanity, an "L" cabinet styled eat-in kitchen with dish-

washer and corner sink, a separate formal dining room, and a comfortable spacious living room directly off the gracious, vaulted ceiling entry foyer with outerwear closet add to this satisfying layout. Additionally, there are provided on this level a separate laundry/utility room, and direct access to a one car garage.

An exposed contemporary staircase leads to the second floor containing an 18 foot bedroom with a full wall of closets, and full bath with tub and vanity. Completing the upper level is a loft area with contemporary railing, overlooking the cathedral ceiling family room.



**SECOND FLOOR**

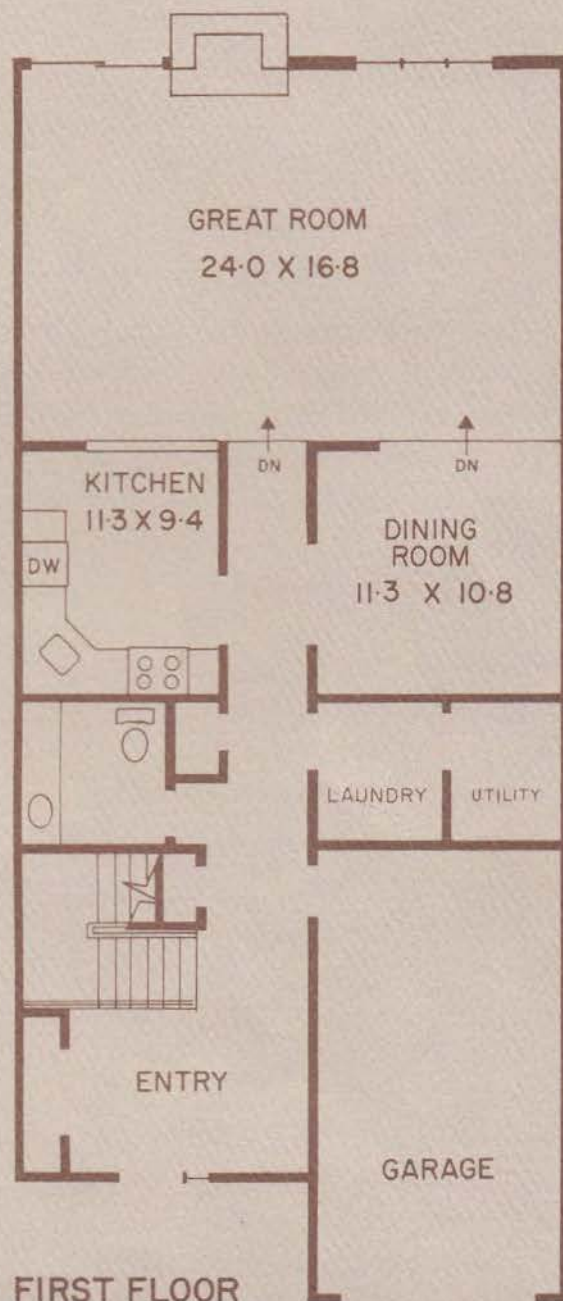
If three bedrooms with lots of space meet your need or desire, here is the townhome that ideally serves that purpose.

The first floor level features a spacious 2 storied entry foyer with expanded outerwear closet, separate laundry room, extensive "L" styled cabinet kitchen with stainless steel corner sink, eat-in area, and pass thru to the magnificent step-down 24 foot great room which features a working fireplace, patio door and extended glass area. A large formal dining room, guest powder room with oversized vanity, and interior access garage all add to this design for today's living.

The exposed contemporary stairway leads to an exceptional master bedroom suite with a personal bath sufficient to accommodate an optionally oversized whirlpool tub, while retaining the separate shower. The suite also features one large walk-in, plus two additional wall closets. Two other huge twin sized bedrooms with extensive closet space, and a large full sized main bath, complete the bedroom level of this marvelously planned and generously sized three bedroom townhome.

## the **WARWICK** (a-3) Townhome

3 Bedrooms - 2 1/2 Baths - Garage



**FIRST FLOOR**



Situated in the suburban splendor of historic Morris County, yet within minutes of all the metropolitan conveniences, Castle Ridge Townhomes at East Hanover, enjoys the best of both worlds. The location of Castle Ridge Townhomes offers residents a wealth of cultural, recreational and educational opportunities at their fingertips.

The finest public and private schools, including prominent universities, a wide selection of local shopping and the most attractive major shopping malls in the region, fine restaurants and houses of worship for all faiths are just minutes away.

Area recreational facilities include swim clubs, prestigious country clubs, lavish golf courses, tennis courts and an extensive county park system. A variety of vibrant civic and social organizations are located in East Hanover.

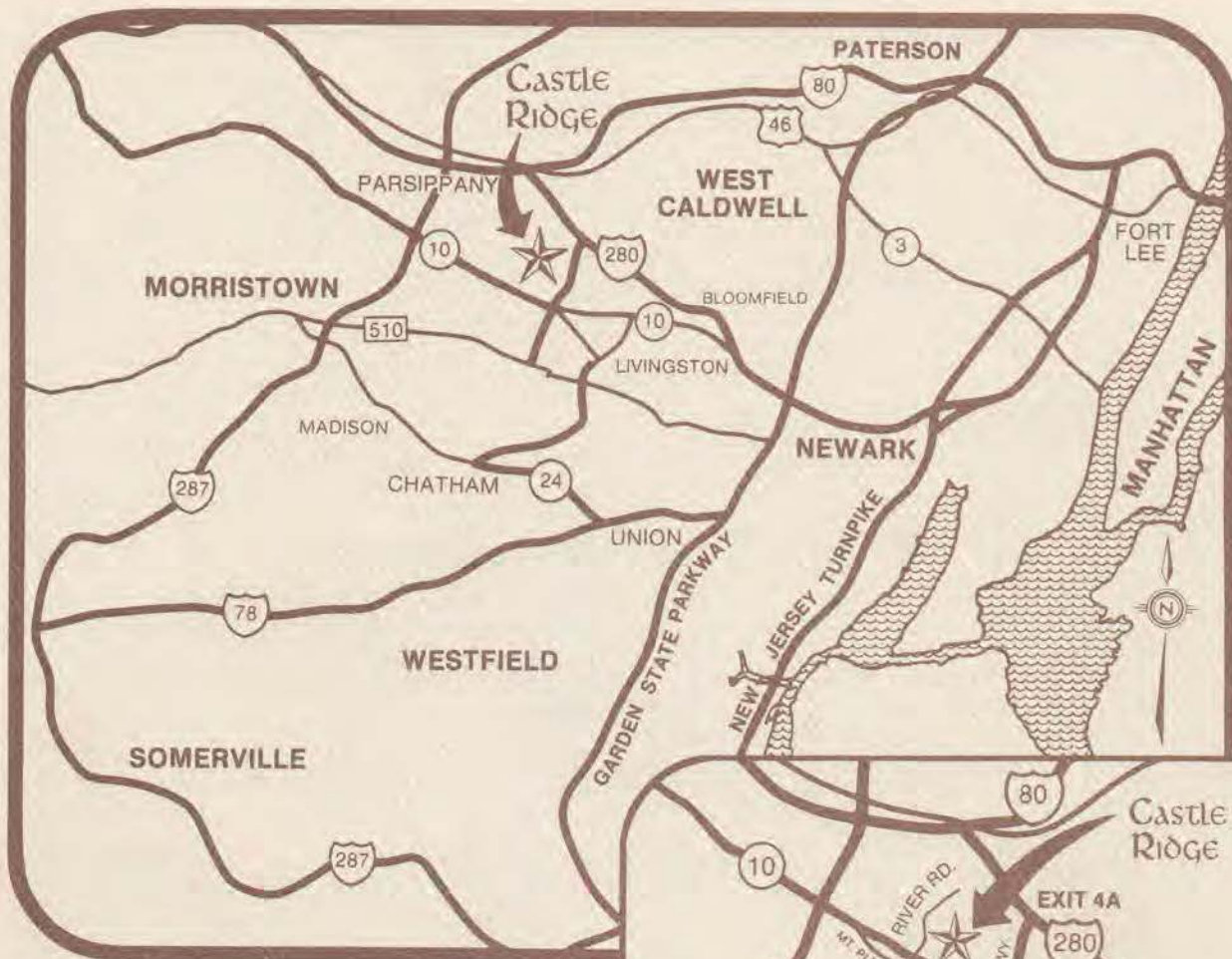
Castle Ridge Townhomes is easily accessible to major highways such as Routes 80, 280, 10 and 287. Public bus and rail transportation serves all metropolitan areas including Manhattan-only 40 minutes away.

Morris County has become a major corporate headquarters center...East Hanover, in the heart of this area, offers outstanding services at a surprisingly low tax rate.

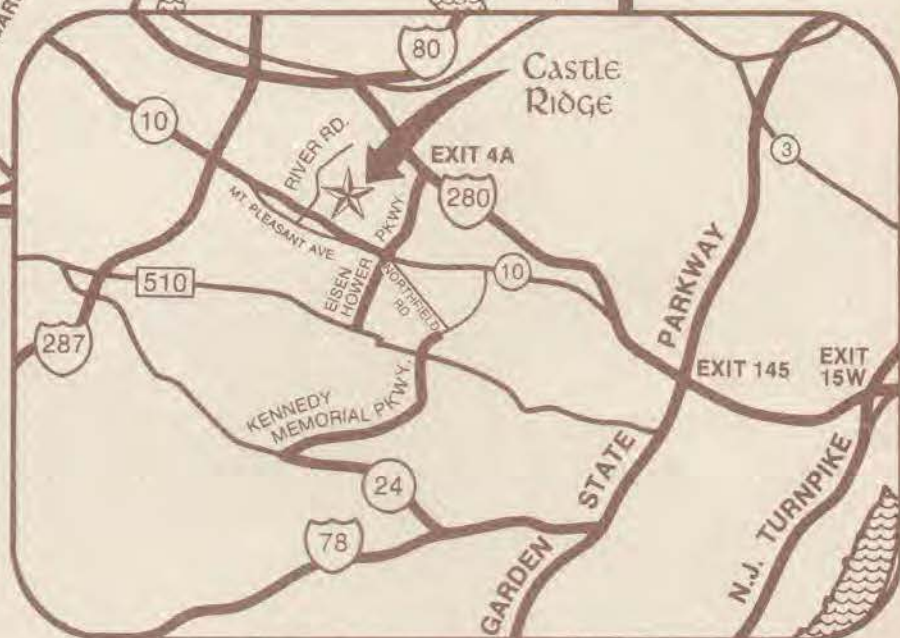
## QUALITY FEATURES

- Two and Three Bedroom Townhome Models
- Ranch Plus Model - Two Bedroom with Loft - Master Bedroom Suite on First Floor
- Two and One Half Luxurious Baths
- Gracious Two Story High Entry Foyers
- One Car Garage plus On-Site Parking
- Color Coordinated General Electric Appliances including Gas Eye Level Double Ovens and Automatic Dishwashers
- Washer and Dryer
- Stainless Steel Corner Kitchen Sinks
- Designer Kitchen Wood Cabinetry (European Style Optional)
- Decorator Styled Vanities
- Contemporary Wood Railings
- Wall to Wall Carpeting, as per Model
- Oversized Whirlpool Tubs Available as Options in Master Bedroom Baths
- Prewired Telephone and TV Outlets-Prepared for Cable TV
- Insulated Glass Windows and Patio Doors with Screens
- Weather Stripped Exterior Doors
- Heat Recirculating Fireplaces
- Central Air Conditioning
- Patio or Wood Decks (subject to finished grade)
- Clean, Efficient and Economical Gas Fired Forced Air Heat
- Partial Brick Fronts with Cedar Siding
- Masonry Walls between Units
- Bathhouse, Swimming Pool and Tennis Courts
- Underground Utilities, no unsightly poles
- Association Monthly Fees, in part, to include the use of all amenities, street lighting, landscaping care, refuse disposal, site snow cleaning, limited fire insurance and liability coverages.





created and designed by emcon advertising and display corp.



**Castle  
Ridge**  
townhomes

**DIRECTIONS:**

**GARDEN STATE PARKWAY & NEW JERSEY TURNPIKE:**

Exit 145 (Garden State Parkway) or Exit 15W, (New Jersey Turnpike), proceed west on Rt. 280 to Eisenhower Parkway (Chatham) Exit 4A. Then Eisenhower Parkway South to Rt. 10 Circle. Turn right Rt. 10 West, to third light, (River Road). Turn right at River Road to Castle Ridge on right.

**RT. 287 NORTH & SOUTH**

Exit Rt. 10 East, proceed approximately 3 miles and bear right at Old Mt. Pleasant Avenue (Sunoco Station following signs for River Road). Continue east approximately 3/4 of a mile, turn left at River Road and cross Rt. 10 to Castle Ridge on right.

**RTES. 24 & 78**

Exit Rt. 24 West to Short Hills Mall, then Kennedy Parkway North (Livingston), Proceed to Northfield Road (Seventh Light), then left at Northfield Road (West) to traffic circle. Continue halfway around traffic circle to Rt. 10 West and straight to third light (River Road). Turn right at River Road to Castle Ridge on right.

**SALES OFFICE      ●      OPEN NOON TO 5:00 P.M.**  
**RIVER ROAD      ●      EAST HANOVER      ●      NEW JERSEY**